

3M™ Versaflo™ TR-600 Powered Air-Respirator

To maintain protection levels, optimise the effective lifetime of the system and avoid the additional cost of replacement, it is extremely important to carry out regular checks and maintenance on Powered and Supplied Air Respirators.

► Battery

- Should be immediately charged after receipt of product

► Before use

- Ensure Battery is fully charged
- Ensure Turbo is undamaged
- Ensure Turbo is correctly secured to its belt
- Ensure Filter is correctly fitted
- Perform airflow check -insert Airflow Indicator Tube. Refer to Turbo user instructions for information
- Perform alarm check. Refer to Turbo user instructions for information

► Monthly

- Carry out all the 'Before Use' inspections and create a record of this monthly check for the turbo

► After use

- Clean with cloth dampened with a mild solution of water and liquid household soap
- Turbo may also be worn through a shower to remove further contaminant
- Turbo can also be immersed for cleaning or put in respirator washer for cleaning (using TR-653 Cleaning & Storage Kit)
- Battery can be immersed for cleaning
- Refer to user instructions for cleaning information
- Charge Battery (if required)
- Change Spark Arrestor, Pre-Filter and/or Filter (if required)
- Store in a dry, clean area/locker away from direct sunlight, high temperature and solvents

► Every filter change

- Inspect Filter and inner seal and replace if damaged
- Always properly install the Filter into the Turbo

► Ordering consumables, repair parts and accessories

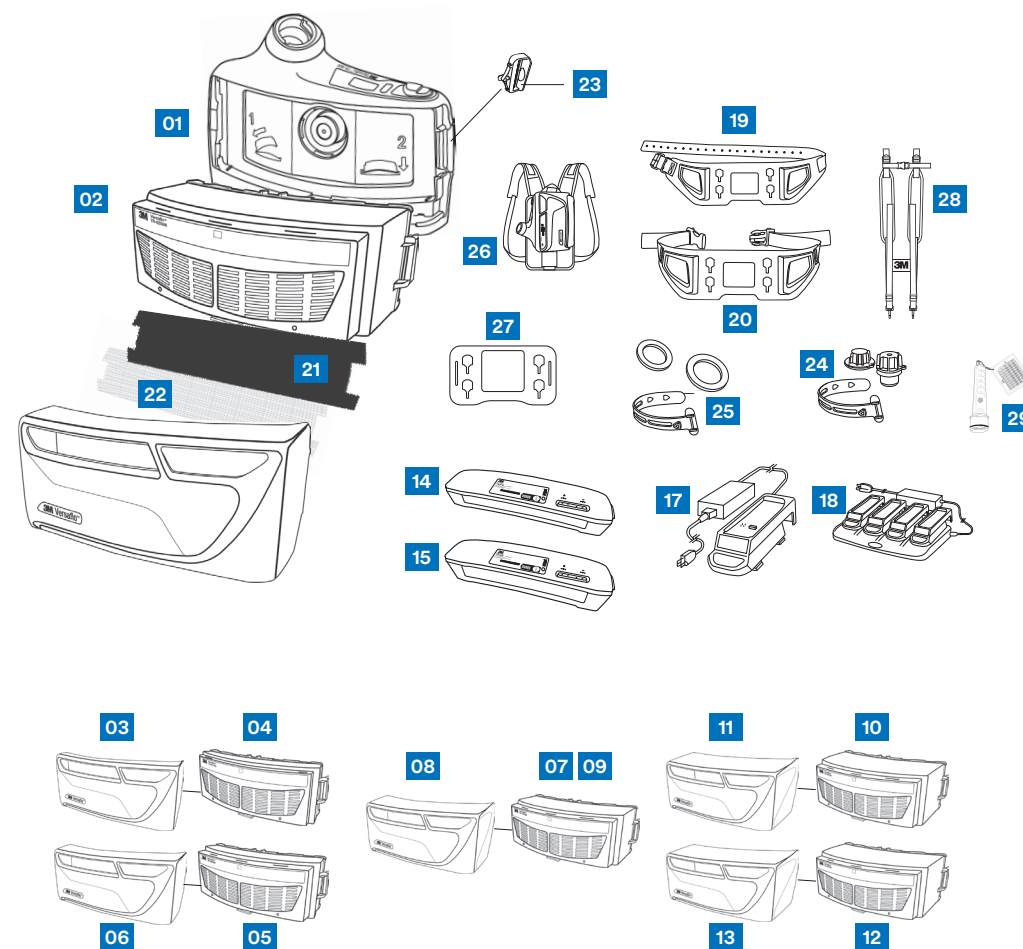
To request a quote or place an order for these items, please contact your 3M Approved Distributor.

► Further information and advice

If you require additional guidance on the Care and Maintenance of your 3M Powered and Supplied Air Equipment, please contact the Helpline or your local 3M representative.

3M Personal Safety Division
3M United Kingdom plc
3M Centre, Cain Road
Bracknell, Berkshire RG12 8HT
Tel: 0870 60 800 60
www.3M.co.uk/safety

Please recycle. Printed in the UK.
3M is trademark of the 3M company.
© 3M 2021. All rights reserved.



**Replace all damaged parts immediately
to ensure correct levels of protection.**



To download this poster please visit:
www.3M.co.uk/maintenancepack or scan the QR code.



Description		Part no.
01	Versaflo Powered Air Turbo TR-602E	TR-602E
02	Versaflo Powered Air Turbo Starter Kit TR-619UK This Versaflo Starter Kit includes the TR-602E Turbo, P filter, filter cover, prefilters (x10), spark arrestors (x2), easy clean belt, high capacity battery, single station battery charger kit, BT-30 length adjusting breathing tube and airflow indicator.	TR-619E
03	Versaflo Filter Cover TR-6700FC	TR-6700FC
04	Versaflo Particulate Filter TR-6710E	TR-6710E
05	Versaflo Particulate/Nuisance Odour Filter TR-6820E	TR-6820E
06	Versaflo Filter Cover TR-6800FC	TR-6800FC
07	Versaflo A1P Filter TR-6110E	TR-6110E
08	Versaflo Filter Cover TR-6100FC	TR-6100FC
09	Versaflo ABE1P Filter TR-6130E	TR-6130E
10	Versaflo A2P Filter TR-6310E	TR-6310E
11	Versaflo Filter Cover TR-6300FC	TR-6300FC
12	Versaflo ABE2K1HgP Filter TR-6580E	TR-6580E
13	Versaflo Filter Cover TR-6500FC	TR-6500FC
14	Versaflo Standard Battery TR-630	TR-630
15	Versaflo High Capacity Battery TR-632	TR-632
16	Versaflo Battery Charger Cradle TR-640	TR-640
17	Versaflo Single Station Battery Charger Kit TR-641UK	TR-641E
18	Versaflo 4-Station Battery Charger Kit TR-644UK	TR-644E
19	Versaflo High Durability Belt TR-626	TR-626
20	Versaflo Easy Clean Belt TR-627	TR-627
21	Versaflo Pre-filter TR-6600	TR-6600
22	Versaflo Spark Arrestor TR-662	TR-662
23	Versaflo Filter Latch Assembly TR-651	TR-651
24	Versaflo Cleaning & Storage Kit TR-653	TR-653
25	Versaflo Cleaning & Storage Replacement Seals TR-654	TR-654
26	Versaflo Backpack BPK-01	BPK-01
27	Versaflo Backpack Adapter TR-655	TR-655
28	Versaflo Braces TR-329	TR-329
29	Versaflo Airflow Indicator TR-971	TR-971

Note

3M does not accept responsibility or liability, direct or consequential, arising from reliance upon any information provided and the user should determine the suitability of the products for their intended use. Nothing in this statement will be deemed to exclude or restrict 3M's liability for death or personal injury arising from its negligence or fraudulent misrepresentation.